

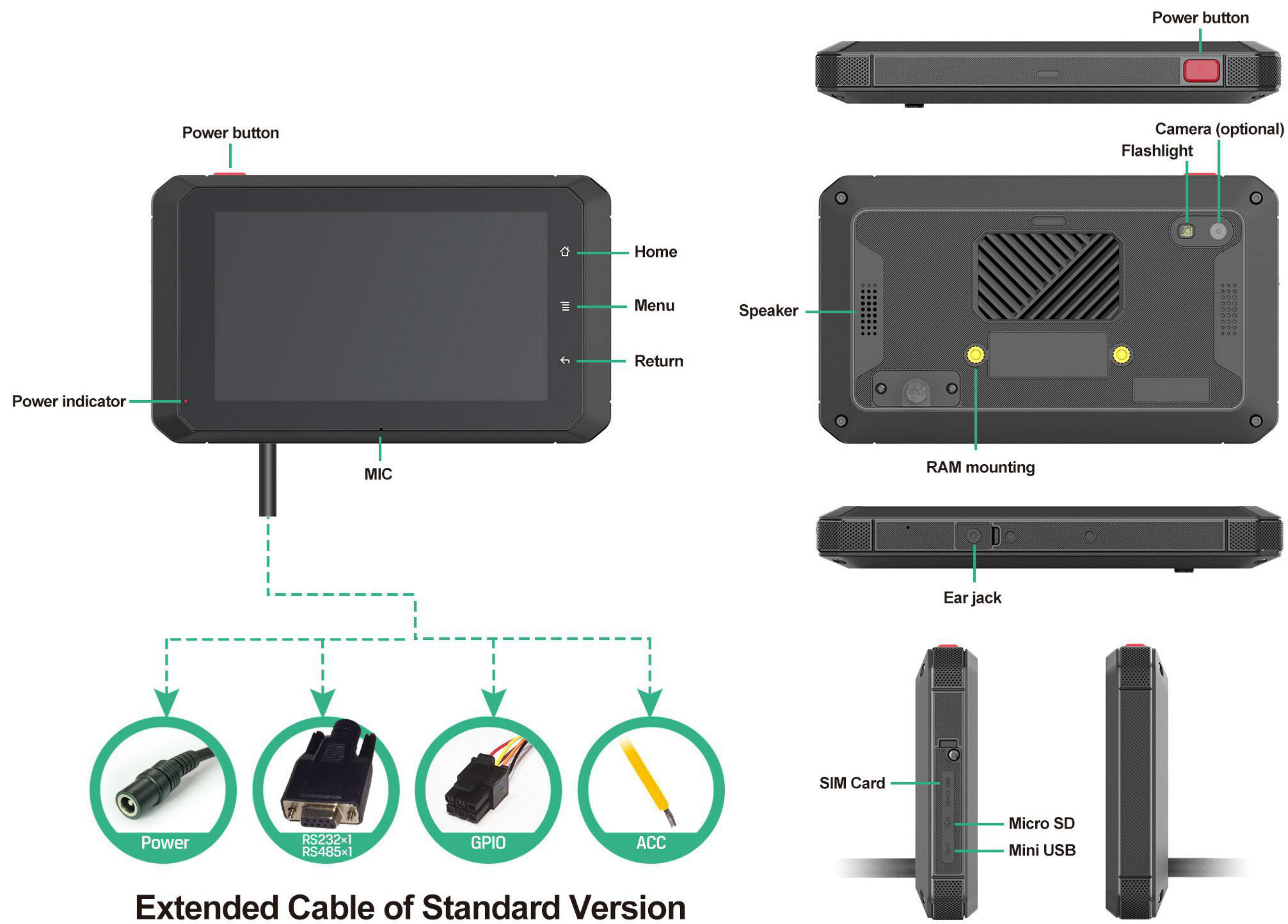
# IN-VEHICLE TABLET

## N555



N555 is thin and light, furthermore with the durability and reliability that would expect from a rugged Android tablet. It's integrated GPS, LTE, WiFi, Bluetooth and various sensors, so it is ideally suited to deliver and support value-added functions like fleet management, dispatch and logistics, etc. Powered by Android open platform, N555 offers a comprehensive developing environment for independent application programming and system integration.









# Specifications

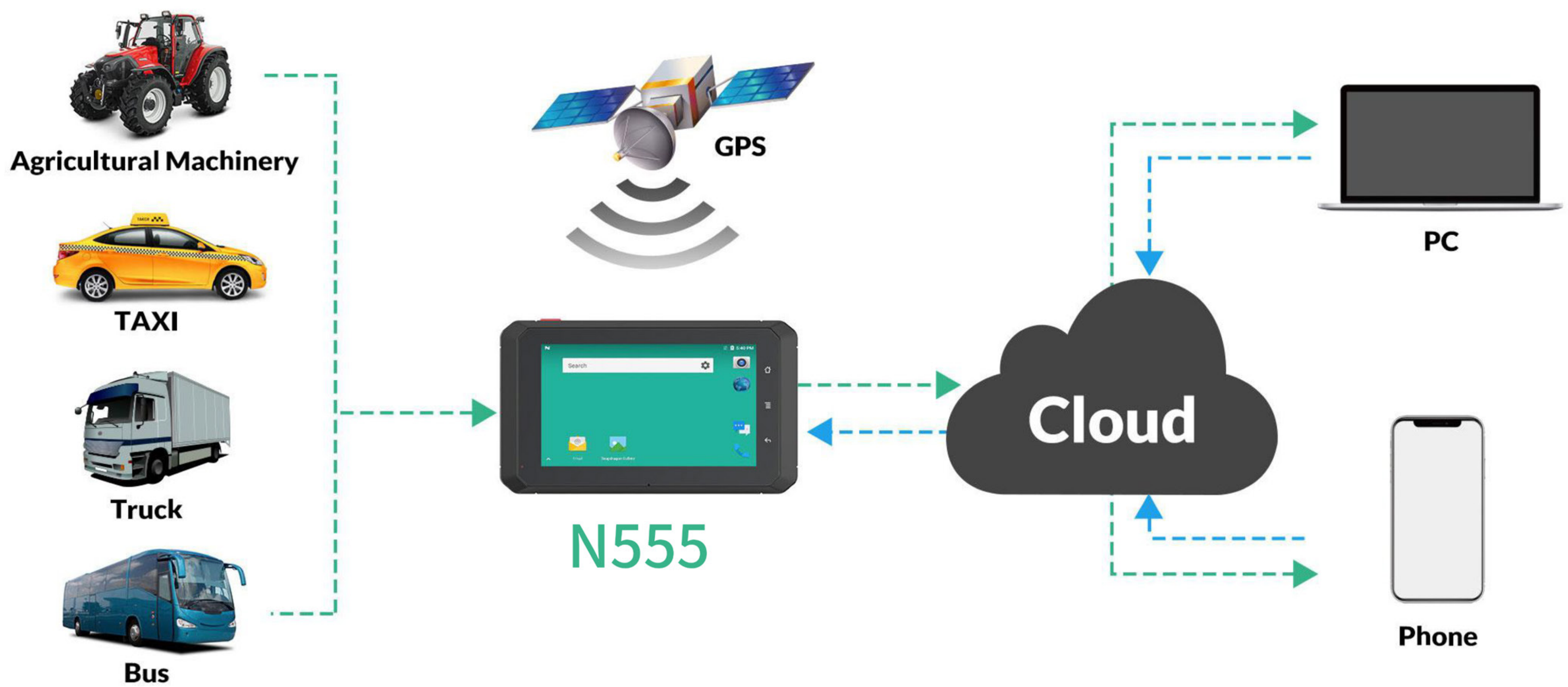
CPU	Qualcomm Cortex-A7 32-bit Quad-core processor, 1.1GHz
Operating System	Android 7.1
LCD	5" 854 x 480 300 nits
Touchscreen	Multi touch capacitive touchscreen
RAM	2GB
Storage	16GB
Storage Expansion	Micro SD 64GB
Camera (optional)	Rear: 8MP
Bluetooth	BT4.2 (BR/EDR+BLE)
WLAN	IEEE 802.11a/b/g/n; 2.4GHz/5GHz
Mobile Broadband	LTE, HSPA+, UMTS, EDGE, GPRS, GSM (Data and Voice)
GNSS	GPS/GLONASS
NFC (optional)	Supports Type A,B, FeliCa, ISO15693
Sound	Build-in speaker 1W x 1
	Internal microphone x1
Interfaces	Mini USB, (data transfer support)
	Headset jack x1
	RS232 x1, RS485 x1
	ACC x1
	Digital GPIO : 2x inputs, 2x outputs
	USB TYPE-A
	CAN Bus/ J1939/OBD-II/FMS (optional)
	RJ45 x1 (optional)
Sensors	Acceleration sensors, Compass, Ambient light sensor
Power	Battery: Li-ion 1650 mAh
	DC 8-36V
	ISO 7637-2 Compliant Anti-surge
Buttons	Power on/off button: x1
Mouting (optional)	RAM mount
Physical Dimensions(WxDxH)	152 x 84.2 x 18.5 mm
Weight	450g
Environment	Operating temperature: -10°C ~ 65°C (14°F ~ 149°F) / 0°C ~ 55°C (32°F ~ 131°F) (charging)
	Storage temperature: -20° C ~70° C (-4°F ~ 158°F)
Certifications	CE / FCC





## Intelligent Internet of Vehicles (IoV)

N555 is developed specially for the IoT, making transportation smarter by connecting vehicles, roads and stations into the network. It provides high-speed and secure connectivity for mission critical applications in a wide range of scenarios, such as taxi, police car, ambulances, heavy equipment and logistics. Equipped with cloud-based remote fleet management functions, it offers ubiquitous networking and uninterrupted monitoring for logistics management, asset tracking, mobile office and public security.



## Accessories



Screws for RAM



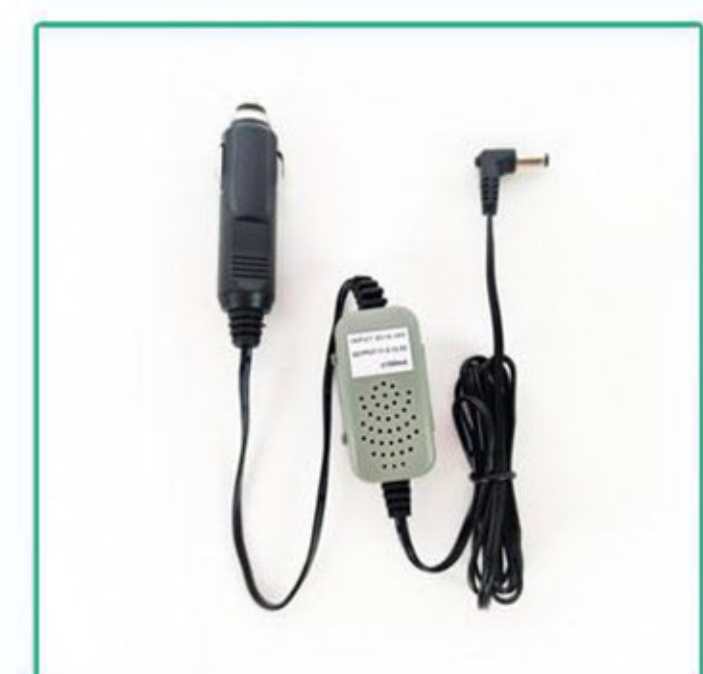
Mini USB cable



Power adaptor



RAM 1" Double Ball Mount with Backing Plate



Car adapter

Optional